

CUSTODY DISTRIBUTION OF THE IN-HOUSE POPULATION AND INDIVIDUALS HOUSED TEMPORARILY IN FACILITIES OUT OF STATE

IN-HOUSE CUSTODY DISTRIBUTION							POPULATION BY CUSTODY LEVEL						CHANGE IN POPULATION BY CUSTODY LEVEL						
DATE	MIN&CT	MED	CLS	MAX	UNA	TOTAL	MIN&CT	MED	CLS	MAX	UNA	TOTAL	MIN&CT	MED	CLS	MAX	UNA	TOTAL	
01/31/2015	14.61%	56.05%	23.35%	2.38%	3.61%	100.00%	1875	7193	2996	306	463	12833							0
03/31/2015	14.24%	56.38%	24.32%	2.91%	2.15%	100.00%	1843	7297	3148	377	278	12943	-32	104	152	71	-185	110	
10/31/2015	14.94%	55.41%	24.44%	3.07%	2.15%	100.00%	1968	7298	3219	404	283	13172	125	1	71	27	5	229	
11/30/2015	15.49%	56.51%	22.76%	3.04%	2.20%	100.00%	2059	7509	3025	404	292	13289	91	211	-194	0	9	117	
12/31/2015	14.86%	56.85%	24.55%	3.03%	0.71%	100.00%	1980	7575	3271	404	95	13325	-79	66	246	0	-197	36	
02/29/2016	15.36%	56.95%	22.59%	3.04%	2.05%	100.00%	2049	7595	3013	406	273	13336	69	20	-258	2	178	11	
03/31/2016	16.05%	58.12%	20.91%	2.97%	1.95%	100.00%	2176	7880	2835	402	265	13558	127	285	-178	-4	-8	222	
04/30/2016	16.31%	56.47%	22.33%	2.90%	1.98%	100.00%	2222	7693	3042	395	270	13622	46	-187	207	-7	5	64	
05/31/2016	16.40%	56.37%	22.52%	2.86%	1.85%	100.00%	2238	7690	3073	390	252	13643	16	-3	31	-5	-18	21	
06/30/2016	16.31%	56.24%	22.68%	2.76%	2.00%	100.00%	2231	7694	3103	378	274	13680	-7	4	30	-12	22	37	
07/31/2016	16.27%	55.53%	23.46%	2.84%	1.90%	100.00%	2227	7600	3211	388	260	13686	-4	-94	108	10	-14	6	
08/31/2016	16.10%	56.20%	22.74%	2.88%	2.09%	100.00%	2205	7699	3115	394	286	13699	-22	99	-96	6	26	13	
9/30/2016	15.98%	56.24%	24.73%	2.91%	0.15%	100.00%	2188	7701	3386	398	20	13693	-17	2	271	4	-266	-6	
10/31/2016	16.62%	56.01%	24.48%	2.78%	0.11%	100.00%	2282	7689	3361	381	15	13728	94	-12	-25	-17	-5	35	
11/30/2016	16.05%	55.79%	24.99%	2.92%	0.25%	100.00%	2210	7680	3440	402	34	13766	-72	-9	79	21	19	38	
12/31/2016	16.08%	53.56%	27.35%	2.87%	0.14%	100.00%	2221	7395	3777	396	19	13808	11	-285	337	-6	-15	42	
1/31/2017	16.15%	53.27%	27.37%	3.13%	0.08%	100.00%	2220	7324	3763	430	11	13748	-1	-71	-14	34	-8	-60	
2/28/2017	16.09%	53.52%	28.66%	1.10%	0.64%	100.00%	2201	7322	3921	150	87	13681	-19	-2	158	-280	76	-67	
3/31/2017	16.42%	53.34%	28.59%	1.25%	0.41%	100.00%	2253	7319	3923	171	56	13722	52	-3	2	21	-31	41	
4/30/2017	16.48%	53.66%	28.13%	1.58%	0.15%	100.00%	2273	7401	3880	218	20	13792	20	82	-43	47	-36	70	
5/31/2017	16.69%	53.26%	28.30%	1.48%	0.25%	100.00%	2306	7358	3910	205	35	13814	33	-43	30	-13	15	22	
6/30/2017	16.81%	52.88%	29.02%	1.13%	0.16%	100.00%	2314	7279	3994	155	22	13764	8	-79	84	-50	-13	-50	
7/31/2017	16.75%	53.11%	28.43%	1.56%	0.15%	100.00%	2287	7250	3881	213	21	13652	-27	-29	-113	58	-1	-112	
8/31/2017	17.09%	52.93%	28.45%	1.49%	0.04%	100.00%	2345	7263	3904	204	6	13722	58	13	23	-9	-15	70	
9/30/2017	16.68%	53.25%	28.53%	1.51%	0.03%	100.00%	2279	7277	3899	207	4	13666	-66	14	-5	3	-2	-56	
10/31/2017	16.38%	53.72%	28.27%	1.60%	0.03%	100.00%	2230	7316	3850	218	4	13618	-49	39	-49	11	0	-48	
11/30/2017	15.83%	53.41%	29.14%	1.57%	0.04%	100.00%	2146	7242	3951	213	6	13558	-84	-74	101	-5	2	-60	
12/31/2017	15.54%	52.80%	29.95%	1.69%	0.01%	100.00%	2096	7120	4039	228	1	13484	-50	-122	88	15	-5	-74	
01/31/2018	15.47%	53.13%	29.73%	1.63%	0.04%	100.00%	2078	7139	3994	219	6	13436	-18	19	-45	-9	5	-48	
2/28/2018	16.05%	53.10%	29.12%	1.68%	0.04%	100.00%	2154	7125	3908	226	6	13419	76	-14	-86	7	0	-17	
3/31/2018	16.61%	51.94%	30.15%	1.30%	0.00%	100.00%	2235	6988	4056	175	0	13454	81	-137	148	-51		35	
4/30/2018	15.85%	52.22%	30.61%	1.32%	0.00%	100.00%	2123	6996	4100	177	0	13396	-112	8	44	2		-58	
5/31/2018	16.32%	53.19%	29.05%	1.39%	0.04%	100.00%	2189	7134	3897	187	6	13413	66	138	-203	10	6	17	
6/30/2018	16.29%	53.23%	29.11%	1.38%	0.00%	100.00%	2187	7147	3908	185	0	13427	-2	13	11	-2		14	
7/31/2018	16.19%	52.94%	29.45%	1.39%	0.03%	100.00%	2175	7114	3957	187	4	13437	-12	-33	49	2	4	10	
8/31/2018	16.25%	52.78%	29.57%	1.40%	0.00%	100.00%	2189	7110	3984	189	0	13471	14	-4	27	2		34	
9/30/2018	16.31%	53.40%	29.04%	1.25%	0.00%	100.00%	2199	7199	3915	169	0	13482	10	89	-69	-20		11	
10/31/2018	16.31%	52.60%	29.66%	1.43%	0.00%	100.00%	2196	7082	3994	192	0	13464	-3	-117	79	23		-18	
11/30/2018	16.23%	55.07%	27.42%	1.30%	0.00%	100.00%	2180	7399	3684	175	0	13436	-16	317	-310	-17		-28	
12/31/2018	16.05%	52.97%	29.67%	1.30%	0.00%	100.00%	2153	7104	3979	175	0	13411	-27	-295	295	0		-25	
1/31/2019	16.15%	53.39%	29.18%	1.28%	0.00%	100.00%	2154	7122	3893	171	0	13340	1	18	-86	-4		-71	
02/28/2019	15.80%	53.70%	29.28%	1.22%	0.00%	100.00%	2103	7145	3896	162	0	13306	-51	23	3	-9		-34	
3/31/2019	16.08%	53.70%	28.90%	1.31%	0.00%	100.00%	2141	7148	3847	175	0	13311	38	3	-49	13		5	
4/30/2019	16.11%	54.15%	28.34%	1.39%	0.00%	100.00%	2137	7182	3758	185	0	13262	-4	34	-89	10		-49	
5/31/2019	16.07%	54.14%	28.45%	1.34%	0.00%	100.00%	2120	7141	3752	177	0	13190	-17	-41	-6	-8		-72	
6/30/2019	16.91%	53.68%	28.10%	1.31%	0.00%	100.00%	2213	7025	3677	172	0	13087	93	-116	-75	-5		-103	
7/31/2019	17.17%	53.47%	27.96%	1.40%	0.00%	100.00%	2251	7011	3666	184	0	13112	38	-14	-11	12		25	
8/31/2019	17.47%	53.32%	27.81%	1.40%	0.00%	100.00%	2267	6919	3608	182	0	12976	16	-92	-58	-2		-136	
9/30/2019	17.21%	51.87%	29.46%	1.46%	0.00%	100.00%	2215	6676	3792	188	0	12871	-52	-243	184	6		-105	
10/31/2019	17.65%	51.68%	29.22%	1.46%	0.00%	100.00%	2251	6593	3727	186	0	12757	36	-83	-65	-2		-114	
11/30/2019	17.88%	51.64%	28.96%	1.52%	0.00%	100.00%	2263	6537	3666	192	0	12658	12	-56	-61	6		-99	
12/31/2019	17.27%	52.86%	28.41%	1.45%	0.00%	100.00%	2168	6634	3566	182	0	12550	-95	97	-100	-10		-108	
1/1/2020	17.79%	52.28%	28.46%	1.48%	0.00%	100.00%	2224	6536	3558	185	0	12503	56	-98	-8	3		-47	
2/29/2020	17.75%	52.09%	28.65%	1.51%	0.00%	100.00%	2219	6513	3582	189	0	12503	-5	-23	24	4		0	
3/31/2020	16.61%	52.85%	29.24%	1.28%	0.03%	100.00%	2051	6527	3611	158	4	12351	-168	14	29	-31	4	-152	
4/30/2020	15.37%	53.40%	29.97%	1.26%	0.00%	100.00%	1883	6542	3672	154	0	12251	-168	15	61	-4		-100	
5/31/2020	14.15%	53.83%	30.52%	1.50%	0.00%	100.00%													

CUSTODY DISTRIBUTION OF THE IN-HOUSE POPULATION WITHOUT INDIVIDUALS HOUSED TEMPORARILY IN FACILITIES OUT OF STATE

IN-HOUSE CUSTODY DISTRIBUTION							POPULATION BY CUSTODY LEVEL						CHANGE IN POPULATION BY CUSTODY LEVEL					
DATE	MIN&CT	MED	CLS	MAX	UNA	TOTAL	MIN&CT	MED	CLS	MAX	UNA	TOTAL	MIN&CT	MED	CLS	MAX	UNA	TOTAL
01/31/2015	14.61%	56.05%	23.35%	2.38%	3.61%	100.00%	1875	7193	2996	306	463	12833						0
03/31/2015	14.24%	56.38%	24.32%	2.91%	2.15%	100.00%	1843	7297	3148	377	278	12943	-32	104	152	71	-185	110
10/31/2015	14.94%	55.41%	24.44%	3.07%	2.15%	100.00%	1968	7298	3219	404	283	13172	125	1	71	27	5	229
11/30/2015	15.49%	56.51%	22.76%	3.04%	2.20%	100.00%	2059	7509	3025	404	292	13289	91	211	-194	0	9	117
12/31/2015	14.86%	56.85%	24.55%	3.03%	0.71%	100.00%	1980	7575	3271	404	95	13325	-79	66	246	0	-197	36
02/29/2016	15.36%	56.95%	22.59%	3.04%	2.05%	100.00%	2049	7595	3013	406	273	13336	69	20	-258	2	178	11
03/31/2016	16.05%	58.12%	20.91%	2.97%	1.95%	100.00%	2176	7880	2835	402	265	13558	127	285	-178	-4	-8	222
04/30/2016	16.31%	56.47%	22.33%	2.90%	1.98%	100.00%	2222	7693	3042	395	270	13622	46	-187	207	-7	5	64
05/31/2016	16.40%	56.37%	22.52%	2.86%	1.85%	100.00%	2238	7690	3073	390	252	13643	16	-3	31	-5	-18	21
06/30/2016	16.31%	56.24%	22.68%	2.76%	2.00%	100.00%	2231	7694	3103	378	274	13680	-7	4	30	-12	22	37
07/31/2016	16.27%	55.53%	23.46%	2.84%	1.90%	100.00%	2227	7600	3211	388	260	13686	-4	-94	108	10	-14	6
08/31/2016	16.10%	56.20%	22.74%	2.88%	2.09%	100.00%	2205	7699	3115	394	286	13699	-22	99	-96	6	26	13
9/30/2016	15.98%	56.24%	24.73%	2.91%	0.15%	100.00%	2188	7701	3386	398	20	13693	-17	2	271	4	-266	-6
10/31/2016	16.62%	56.01%	24.48%	2.78%	0.11%	100.00%	2282	7689	3361	381	15	13728	94	-12	-25	-17	-5	35
11/30/2016	16.05%	55.79%	24.99%	2.92%	0.25%	100.00%	2210	7680	3440	402	34	13766	-72	-9	79	21	19	38
12/31/2016	16.08%	53.56%	27.35%	2.87%	0.14%	100.00%	2221	7395	3777	396	19	13808	11	-285	337	-6	-15	42
1/31/2017	16.15%	53.27%	27.37%	3.13%	0.08%	100.00%	2220	7324	3763	430	11	13748	-1	-71	-14	34	-8	-60
2/28/2017	16.09%	53.52%	28.66%	1.10%	0.64%	100.00%	2201	7322	3921	150	87	13681	-19	-2	158	-280	76	-67
3/31/2017	16.42%	53.34%	28.59%	1.25%	0.41%	100.00%	2253	7319	3923	171	56	13722	52	-3	2	21	-31	41
4/30/2017	16.48%	53.66%	28.13%	1.58%	0.15%	100.00%	2273	7401	3880	218	20	13792	20	82	-43	47	-36	70
5/31/2017	16.69%	53.26%	28.30%	1.48%	0.25%	100.00%	2306	7358	3910	205	35	13814	33	-43	30	-13	15	22
6/30/2017	16.81%	52.88%	29.02%	1.13%	0.16%	100.00%	2314	7279	3994	155	22	13764	8	-79	84	-50	-13	-50
7/31/2017	16.75%	53.11%	28.43%	1.56%	0.15%	100.00%	2287	7250	3881	213	21	13652	-27	-29	-113	58	-1	-112
8/31/2017	17.09%	52.93%	28.45%	1.49%	0.04%	100.00%	2345	7263	3904	204	6	13722	58	13	23	-9	-15	70
9/30/2017	16.68%	53.25%	28.53%	1.51%	0.03%	100.00%	2279	7277	3899	207	4	13666	-66	14	-5	3	-2	-56
10/31/2017	16.38%	53.72%	28.27%	1.60%	0.03%	100.00%	2230	7316	3850	218	4	13618	-49	39	-49	11	0	-48
11/30/2017	15.99%	53.89%	28.62%	1.47%	0.04%	100.00%	2146	7233	3841	197	6	13423	-84	-83	-9	-21	2	-195
12/31/2017	15.78%	53.05%	29.57%	1.60%	0.01%	100.00%	2096	7047	3928	212	1	13284	-50	-186	87	15	-5	-139
01/31/2018	15.74%	53.25%	29.42%	1.54%	0.05%	100.00%	2078	7028	3883	203	6	13198	-18	-19	-45	-9	5	-86
2/28/2018	16.29%	53.36%	28.75%	1.56%	0.05%	100.00%	2154	7053	3800	206	6	13219	76	25	-83	3	0	21
3/31/2018	16.86%	52.18%	29.78%	1.17%	0.01%	100.00%	2235	6916	3948	155	1	13255	81	-137	148	-51	-5	36
4/30/2018	16.09%	52.47%	30.25%	1.19%	0.00%	100.00%	2123	6924	3992	157	0	13196	-112	8	44	2		-59
5/31/2018	16.57%	53.44%	28.68%	1.26%	0.05%	100.00%	2189	7062	3790	167	6	13214	66	138	-202	10	6	18
6/30/2018	16.53%	53.49%	28.73%	1.25%	0.00%	100.00%	2187	7075	3801	165	0	13228	-2	13	11	-2		14
7/31/2018	16.43%	53.20%	29.08%	1.26%	0.03%	100.00%	2175	7042	3850	167	4	13238	-12	-33	49	2	4	10
8/31/2018	16.49%	53.02%	29.21%	1.27%	0.00%	100.00%	2189	7038	3877	169	0	13273	14	-4	27	2		35
9/30/2018	16.55%	52.70%	29.47%	1.27%	0.00%	100.00%	2199	7001	3915	169	0	13284	10	-37	38	0		11
10/31/2018	16.55%	52.82%	29.32%	1.31%	0.00%	100.00%	2196	7007	3889	174	0	13266	-3	6	-26	5		-18
11/30/2018	16.47%	55.16%	27.13%	1.25%	0.00%	100.00%	2180	7302	3591	165	0	13238	-16	295	-298	-9		-28
12/31/2018	16.30%	53.02%	29.44%	1.25%	0.00%	100.00%	2153	7004	3889	165	0	13211	-27	-298	298	0		-27
1/31/2019	16.39%	53.14%	29.25%	1.23%	0.00%	100.00%	2154	6982	3843	161	0	13140	1	-22	-46	-4		-71
2/28/2019	16.05%	53.45%	29.35%	1.16%	0.00%	100.00%	2103	7005	3846	152	0	13106	-51	23	3	-9		-34
3/31/2019	16.33%	53.45%	28.96%	1.26%	0.00%	100.00%	2141	7008	3797	165	0	13111	38	3	-49	13		5
4/30/2019	16.36%	53.91%	28.39%	1.34%	0.00%	100.00%	2137	7042	3708	175	0	13062	-4	34	-89	10		-49
5/31/2019	16.32%	53.90%	28.50%	1.29%	0.00%	100.00%	2120	7001	3702	167	0	12990	-17	-41	-6	-8		-72
6/30/2019	17.17%	53.43%	28.14%	1.26%	0.00%	100.00%	2213	6885	3627	162	0	12887	93	-116	-75	-5		-103
7/31/2019	17.43%	53.21%	28.00%	1.35%	0.00%	100.00%	2251	6871	3616	174	0	12912	38	-14	-11	12		25
8/31/2019	17.61%	53.15%	27.99%	1.26%	0.00%	100.00%	2267	6843	3604	162	0	12876	16	-28	-12	-12		-36
9/30/2019	17.34%	51.68%	29.66%	1.32%	0.00%	100.00%	2215	6600	3788	168	0	12771	-52	-243	184	6		-105
10/31/2019	17.78%	51.49%	29.41%	1.31%	0.00%	100.00%	2251	6517	3723	166	0	12657	36	-83	-65	-2		-114
11/30/2019	18.02%	51.45%	29.16%	1.37%	0.00%	100.00%	2263	6461	3662	172	0	12558	12	-56	-61	6		-99
12/31/2019	17.41%	52.67%	28.61%	1.30%	0.00%	100.00%	2168	6558	3562	162	0	12450	-95	97	-100	-10		-108
1/1/2020	17.93%	52.08%	28.65%	1.33%	0.00%	100.00%	2224	6460	3554	165	0	12403	56	-98	-8	3		-47
2/29/2020	17.89%	51.90%	28.85%	1.36%	0.00%	100.00%	2219	6437	3578	169	0	12403	-5	-23	24	4		0
3/31/2020	16.74%	52.66%	29.44%	1.13%	0.03%	100.00%	2051	6451	3607	138	4	12251	-168	14	29	-31	4	-152
4/30/2020	15.50%	53.22%	30.18%	1.10%	0.00%	100.00%	1883	6467	3668	134	0	12152	-168	16	61	-4		-99
5/31/2020	14.27%	53.65%	30.74%	1.35%	0.00%	100.00%	1703	6404	3669	161	0	11937	-180	-63	1	27		-215
6/30/2020	13.82%	53.50%	31.21%	1.46%	0.00%	100.00%	1637	6337	3697	173	0	11844	-66	-67	28	12		-93
7/31/2020	14.47%	53.02%	31.15%	1.36%	0.00%	100.00%	1686	6178	3630	158	0	11652	49	-159	-67	-15		-192

CUSTODY DISTRIBUTION OF THE IN-HOUSE POPULATION AND INDIVIDUALS HOUSED TEMPORARILY IN FACILITIES OUT OF STATE

MALE POPULATION CUSTODY DISTRIBUTION							POPULATION BY CUSTODY LEVEL						CHANGE IN POPULATION BY CUSTODY LEVEL					
DATE	MIN&CT	MED	CLS	MAX	UNA	TOTAL	MIN&CT	MED	CLS	MAX	UNA	TOTAL	MIN&CT	MED	CLS	MAX	UNA	TOTAL
01/31/2015	13.80%	56.60%	24.48%	2.60%	2.52%	100.00%	1621	6649	2876	306	296	11748						0
03/31/2015	13.63%	55.43%	26.11%	3.19%	1.64%	100.00%	1613	6559	3089	377	194	11832	-8	-90	213	71	-102	84
10/31/2015	14.15%	54.94%	25.91%	3.36%	1.64%	100.00%	1701	6601	3113	404	197	12016	88	42	24	27	3	184
11/30/2015	14.19%	56.58%	24.20%	3.36%	1.67%	100.00%	1796	6813	2914	404	201	12128	95	212	-199	0	4	112
12/31/2015	14.14%	56.18%	26.03%	3.33%	0.31%	100.00%	1716	6818	3159	404	38	12135	-80	5	245	0	-163	7
02/29/2016	14.62%	56.25%	23.97%	3.35%	1.81%	100.00%	1773	6822	2907	406	220	12128	57	4	-252	2	182	-7
03/31/2016	15.36%	57.59%	22.07%	3.25%	1.72%	100.00%	1898	7114	2726	402	213	12353	125	292	-181	-4	-7	225
04/30/2016	15.62%	55.83%	23.51%	3.19%	1.86%	100.00%	1937	6923	2915	395	231	12401	39	-191	189	-7	18	48
05/31/2016	15.71%	55.71%	23.80%	3.14%	1.64%	100.00%	1950	6915	2954	390	204	12413	13	-8	39	-5	-27	12
06/30/2016	15.75%	55.49%	23.89%	3.03%	1.84%	100.00%	1962	6911	2975	378	229	12455	12	-4	21	-12	25	42
07/31/2016	15.78%	54.69%	24.79%	3.11%	1.63%	100.00%	1966	6816	3089	388	203	12462	4	-95	114	10	-26	7
08/31/2016	15.58%	55.41%	23.99%	3.16%	1.87%	100.00%	1945	6916	2994	394	233	12482	-21	100	-95	6	30	20
9/30/2016	15.47%	55.50%	25.70%	3.19%	0.14%	100.00%	1929	6922	3206	398	18	12473	-16	6	212	4	-215	-9
10/31/2016	16.06%	55.31%	25.48%	3.05%	0.10%	100.00%	2007	6910	3183	381	13	12494	78	-12	-23	-17	-5	21
11/30/2016	15.47%	54.95%	26.09%	3.21%	0.27%	100.00%	1937	6880	3267	402	34	12520	-70	-30	84	21	21	26
12/31/2016	15.57%	52.42%	28.72%	3.16%	0.14%	100.00%	1954	6579	3604	396	17	12550	17	-301	337	-6	-17	30
1/31/2017	15.50%	52.21%	28.78%	3.45%	0.07%	100.00%	1932	6509	3588	430	9	12468	-22	-70	-16	34	-8	-82
2/28/2017	15.43%	52.51%	30.59%	1.20%	0.27%	100.00%	1925	6549	3815	150	34	12473	-7	40	227	-280	25	5
3/31/2017	15.78%	52.35%	30.47%	1.37%	0.03%	100.00%	1975	6553	3814	171	4	12517	50	4	-1	21	-30	44
4/30/2017	15.91%	52.44%	29.75%	1.74%	0.15%	100.00%	1988	6553	3717	218	19	12495	13	0	-97	47	15	-22
5/31/2017	16.20%	52.03%	29.86%	1.64%	0.27%	100.00%	2027	6512	3737	205	34	12515	39	-41	20	-13	15	20
6/30/2017	16.39%	51.54%	30.67%	1.24%	0.16%	100.00%	2043	6426	3824	155	20	12468	16	-86	87	-50	-14	-47
7/31/2017	16.32%	51.70%	30.11%	1.72%	0.15%	100.00%	2021	6400	3727	213	19	12380	-22	-26	-97	58	-1	-88
8/31/2017	16.61%	51.40%	30.32%	1.64%	0.03%	100.00%	2068	6398	3774	204	4	12448	47	-2	47	-9	-15	68
9/30/2017	16.21%	51.72%	30.37%	1.67%	0.03%	100.00%	2009	6411	3764	207	4	12395	-59	13	-10	3	0	-53
10/31/2017	15.85%	52.15%	30.21%	1.76%	0.03%	100.00%	1958	6442	3732	218	4	12354	-51	31	-32	11	0	-41
11/30/2017	15.30%	51.99%	30.94%	1.73%	0.03%	100.00%	1884	6401	3809	213	4	12311	-74	-41	77	-5	0	-43
12/31/2017	14.96%	51.28%	31.90%	1.86%	0.00%	100.00%	1833	6282	3908	228	0	12251	-51	-119	99	15	-4	-60
1/31/2018	14.78%	51.67%	31.72%	1.79%	0.03%	100.00%	1804	6309	3873	219	4	12209	-29	27	-35	-9	4	-42
2/28/2018	15.44%	51.57%	31.10%	1.86%	0.03%	100.00%	1880	6280	3787	226	4	12177	76	-29	-86	7	0	-32
3/31/2018	16.15%	50.28%	32.14%	1.43%	0.00%	100.00%	1972	6141	3926	175	0	12214	92	-139	139	-51	-4	37
4/30/2018	15.50%	50.55%	32.50%	1.45%	0.00%	100.00%	1888	6156	3958	177	0	12179	-84	15	32	2	0	-35
5/31/2018	16.02%	51.41%	31.00%	1.53%	0.03%	100.00%	1957	6279	3786	187	4	12213	69	123	-172	10	4	34
6/30/2018	16.08%	51.44%	30.97%	1.52%	0.00%	100.00%	1963	6281	3782	185	0	12211	6	2	-4	-2	-4	-2
7/31/2018	15.91%	51.27%	31.26%	1.53%	0.03%	100.00%	1946	6273	3825	187	4	12235	-17	-8	43	2	4	24
8/31/2018	16.03%	50.93%	31.51%	1.54%	0.00%	100.00%	1968	6254	3870	189	0	12280	22	-19	45	2	-4	46
9/30/2018	16.10%	51.90%	30.62%	1.38%	0.00%	100.00%	1975	6368	3757	169	0	12269	7	114	-113	-20	0	-12
10/31/2018	16.18%	50.89%	31.36%	1.57%	0.00%	100.00%	1980	6226	3837	192	0	12235	5	-142	80	23	0	-34
11/30/2018	16.12%	53.00%	29.46%	1.44%	0.00%	100.00%	1964	6458	3589	175	0	12184	-16	232	-248	-17	0	-49
12/31/2018	15.88%	51.21%	31.47%	1.44%	0.00%	100.00%	1930	6225	3826	175	0	12156	-34	-233	237	0	0	-30
1/31/2019	15.87%	51.73%	30.98%	1.42%	0.00%	100.00%	1917	6250	3743	171	0	12081	-13	25	-83	-4	0	-75
2/28/2019	15.51%	52.06%	31.09%	1.35%	0.00%	100.00%	1867	6268	3744	162	0	12041	-50	18	1	-9	0	-40
3/31/2019	15.82%	52.03%	30.69%	1.45%	0.00%	100.00%	1906	6267	3697	175	0	12045	39	-1	-47	13	0	4
4/30/2019	15.84%	52.64%	29.98%	1.54%	0.00%	100.00%	1902	6322	3601	185	0	12010	-4	55	-96	10	0	-35
5/31/2019	15.58%	52.66%	30.28%	1.48%	0.00%	100.00%	1861	6289	3616	177	0	11943	-41	-33	15	-8	0	-67
6/30/2019	16.27%	52.20%	30.08%	1.45%	0.00%	100.00%	1927	6184	3564	172	0	11847	66	-105	-52	-5	0	-96
7/31/2019	16.41%	51.99%	30.05%	1.55%	0.00%	100.00%	1949	6174	3568	184	0	11875	22	-10	4	12	0	28
8/31/2019	16.60%	51.92%	29.93%	1.55%	0.00%	100.00%	1945	6085	3507	182	0	11719	-4	-89	-61	-2	0	-156
9/30/2019	16.49%	50.26%	31.63%	1.62%	0.00%	100.00%	1917	5843	3677	188	0	11625	-28	-242	170	6	0	-94
10/31/2019	17.05%	49.92%	31.42%	1.61%	0.00%	100.00%	1964	5750	3619	186	0	11519	47	-93	-58	-2	0	-106
11/30/2019	17.27%	49.95%	31.11%	1.68%	0.00%	100.00%	1977	5718	3561	192	0	11448	13	-32	-58	6	0	-71
12/31/2019	16.97%	51.07%	30.36%	1.60%	0.00%	100.00%	1928	5803	3450	182	0	11363	-49	85	-111	-10	0	-85
1/1/2020	17.47%	50.73%	30.17%	1.63%	0.00%	100.00%	1978	5745	3416	185	0	11324	50	-58	-34	3	0	-39
2/29/2020	17.14%	50.75%	30.45%	1.67%	0.00%	100.00%	1943	5754	3452	189	0	11338	-35	9	36	4	0	14
3/31/2020	16.00%	51.19%	31.37%	1.41%	0.04%	100.00%	1797	5748	3522	158	4	11229	-146	-6	70	-31	4	-109
4/30/2020	14.93%	51.74%	31.94%	1.38%	0.00%	100.00%	1662	5758	3555	154	0	11129	-135	10	33	-4	-4	-100
5/31/2020	13.70%	52.14%	32.52%	1.65%	0.00%	100.00%	1501	5714	3564	181	0	10960	-161	-44	9	27	0	-169
6/30/2020	12.98%	52.42%	32.83%	1.77%	0.00%	100.00%	1412	5703	3572	193	0	10880	-89	-11	8	12	0	-80
7/31/2020	13.80%	51.60%	33.11%	1.49%	0.00%	100.00%	1483	5544	3557	160	0	10744	71	-159	-15	-33	0	-136

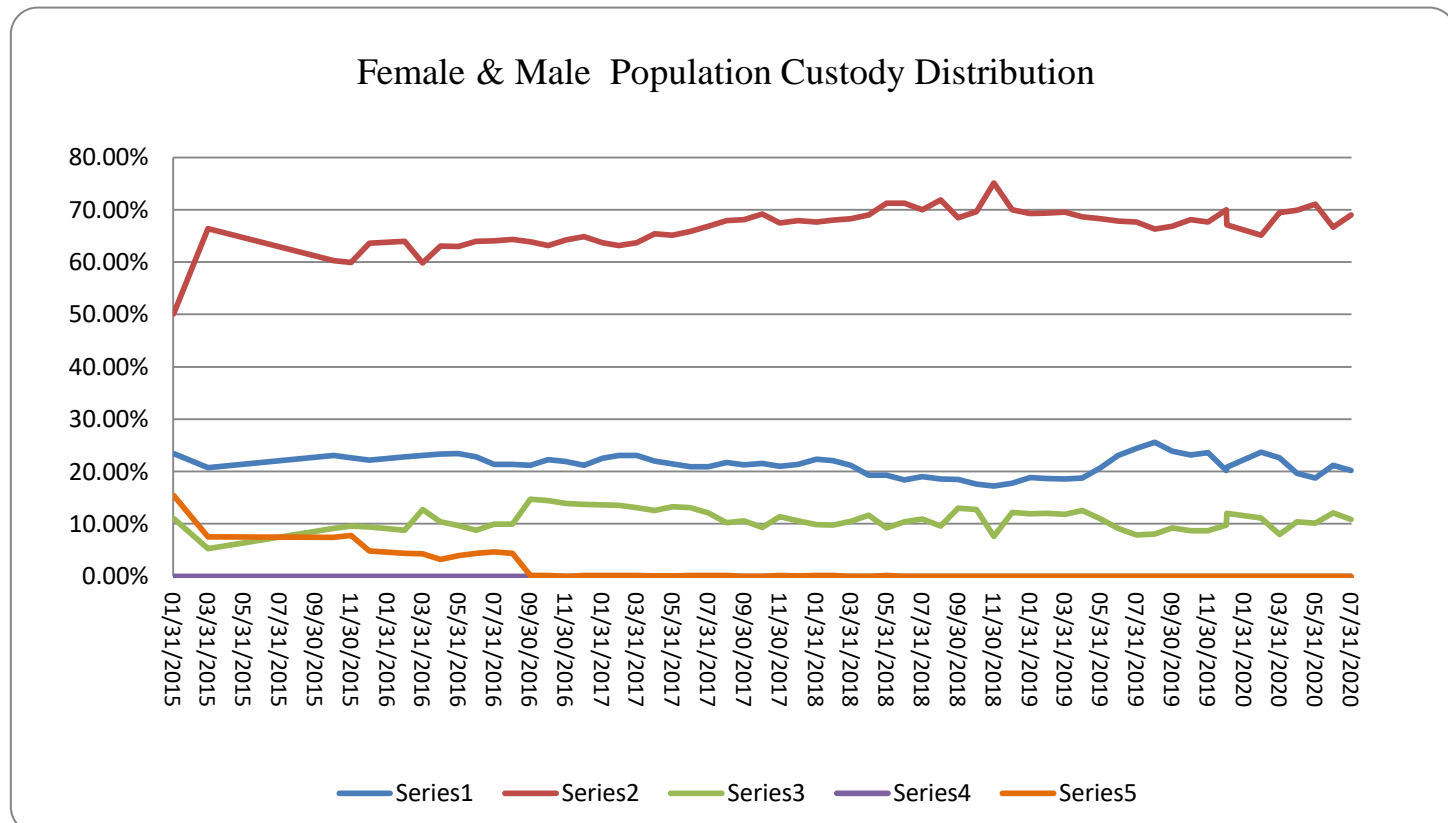
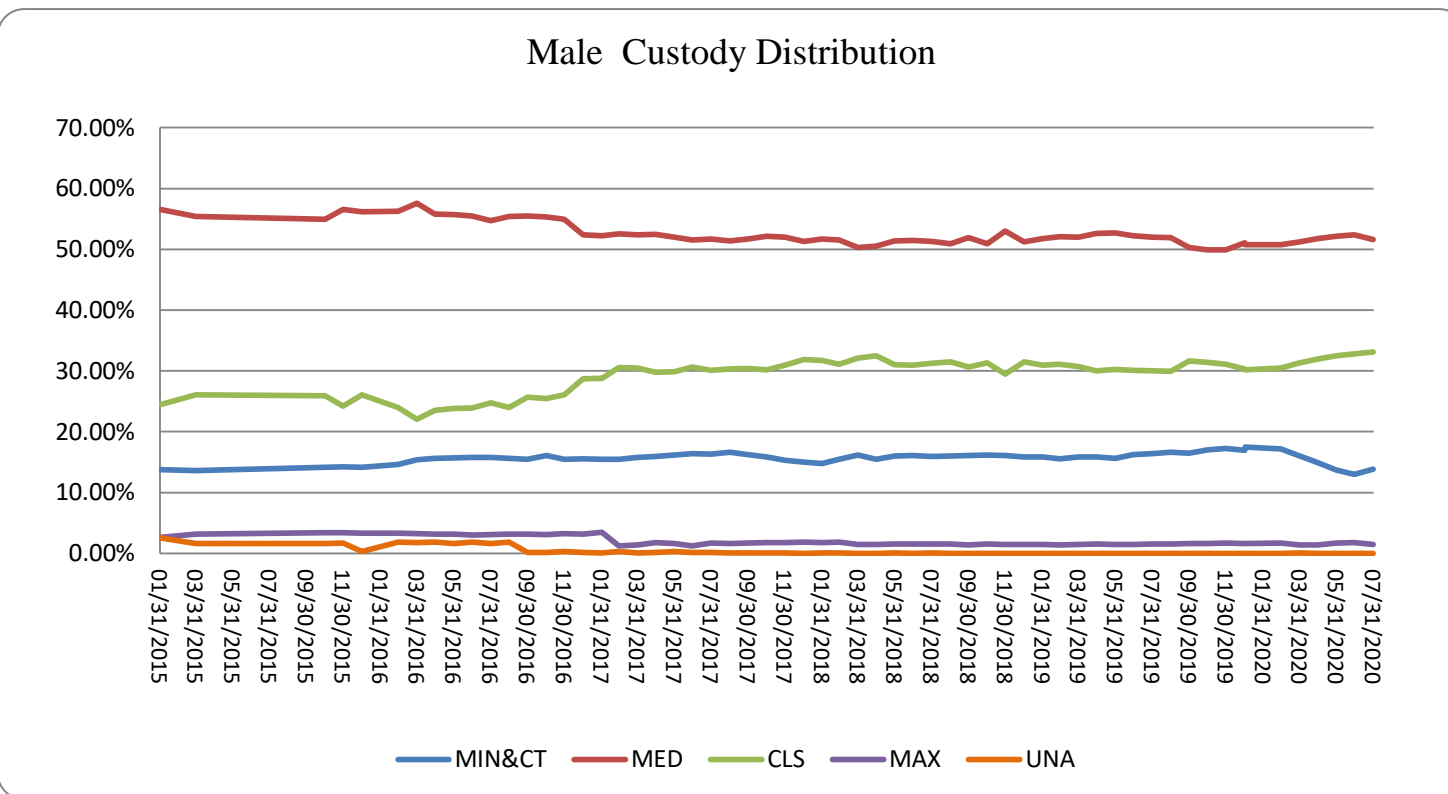
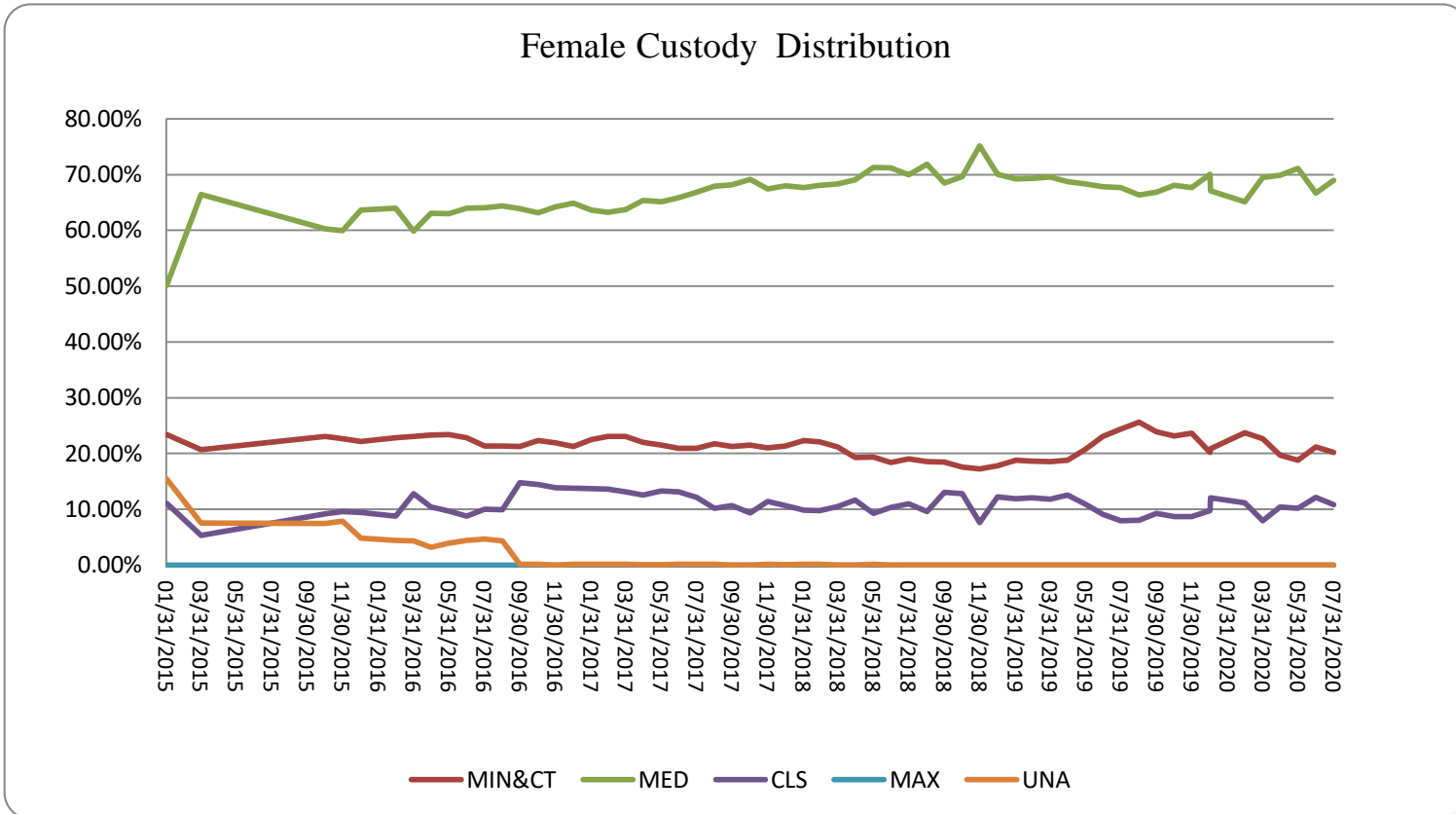
CUSTODY DISTRIBUTION OF THE IN-HOUSE POPULATION WITHOUT INDIVIDUALS HOUSED TEMPORARILY IN FACILITIES OUT OF STATE

MALE POPULATION CUSTODY DISTRIBUTION								POPULATION BY CUSTODY LEVEL						CHANGE IN POPULATION BY CUSTODY LEVEL					
DATE	MIN&CT	MED	CLS	MAX	UNA	TOTAL		MIN&CT	MED	CLS	MAX	UNA	TOTAL	MIN&CT	MED	CLS	MAX	UNA	TOTAL
01/31/2015	13.80%	56.60%	24.48%	2.60%	2.52%	100.00%		1621	6649	2876	306	296	11748						
03/31/2015	13.63%	55.43%	26.11%	3.19%	1.64%	100.00%		1613	6559	3089	377	194	11832	-8	-90	213	71	-102	84
10/31/2015	14.15%	54.94%	25.91%	3.36%	1.64%	100.00%		1701	6601	3113	404	197	12016	88	42	24	27	3	184
11/30/2015	14.19%	56.58%	24.20%	3.36%	1.67%	100.00%		1796	6813	2914	404	201	12128	95	212	-199	0	4	112
12/31/2015	14.14%	56.18%	26.03%	3.33%	0.31%	100.00%		1716	6818	3159	404	38	12135	-80	5	245	0	-163	7
02/29/2016	14.62%	56.25%	23.97%	3.35%	1.81%	100.00%		1773	6822	2907	406	220	12128	57	4	-252	2	182	-7
03/31/2016	15.36%	57.59%	22.07%	3.25%	1.72%	100.00%		1898	7114	2726	402	213	12353	125	292	-181	-4	-7	225
04/30/2016	15.62%	55.83%	23.51%	3.19%	1.86%	100.00%		1937	6923	2915	395	231	12401	39	-191	189	-7	18	48
05/31/2016	15.71%	55.71%	23.80%	3.14%	1.64%	100.00%		1950	6915	2954	390	204	12413	13	-8	39	-5	-27	12
06/30/2016	15.75%	55.49%	23.89%	3.03%	1.84%	100.00%		1962	6911	2975	378	229	12455	12	-4	21	-12	25	42
07/31/2016	15.78%	54.69%	24.79%	3.11%	1.63%	100.00%		1966	6816	3089	388	203	12462	4	-95	114	10	-26	7
08/31/2016	15.58%	55.41%	23.99%	3.16%	1.87%	100.00%		1945	6916	2994	394	233	12482	-21	100	-95	6	30	20
9/30/2016	15.47%	55.50%	25.70%	3.19%	0.14%	100.00%		1929	6922	3206	398	18	12473	-16	6	212	4	-215	-9
10/31/2016	16.06%	55.31%	25.48%	3.05%	0.10%	100.00%		2007	6910	3183	381	13	12494	78	-12	-23	-17	-5	21
11/30/2016	15.47%	54.95%	26.09%	3.21%	0.27%	100.00%		1937	6880	3267	402	34	12520	-70	-30	84	21	21	26
12/31/2016	15.57%	52.42%	28.72%	3.16%	0.14%	100.00%		1954	6579	3604	396	17	12550	17	-301	337	-6	-17	30
1/31/2017	15.50%	52.21%	28.78%	3.45%	0.07%	100.00%		1932	6509	3588	430	9	12468	-22	-70	-16	34	-8	-82
2/28/2017	15.43%	52.51%	30.59%	1.20%	0.27%	100.00%		1925	6549	3815	150	34	12473	-7	40	227	-280	25	5
3/31/2017	15.78%	52.35%	30.47%	1.37%	0.03%	100.00%		1975	6553	3814	171	4	12517	50	4	-1	21	-30	44
4/30/2017	15.91%	52.44%	29.75%	1.74%	0.15%	100.00%		1988	6553	3717	218	19	12495	13	0	-97	47	15	-22
5/31/2017	16.20%	52.03%	29.86%	1.64%	0.27%	100.00%		2027	6512	3737	205	34	12515	39	-41	20	-13	15	20
6/30/2017	16.39%	51.54%	30.67%	1.24%	0.16%	100.00%		2043	6426	3824	155	20	12468	16	-86	87	-50	-14	-47
7/31/2017	16.32%	51.70%	30.11%	1.72%	0.15%	100.00%		2021	6400	3727	213	19	12380	-22	-26	-97	58	-1	-88
8/31/2017	16.61%	51.40%	30.32%	1.64%	0.03%	100.00%		2068	6398	3774	204	4	12448	47	-2	47	-9	-15	68
9/30/2017	16.21%	51.72%	30.37%	1.67%	0.03%	100.00%		2009	6411	3764	207	4	12395	-59	13	-10	3	0	-53
10/31/2017	15.85%	52.15%	30.21%	1.76%	0.03%	100.00%		1958	6442	3732	218	4	12354	-51	31	-32	11	0	-41
11/30/2017	15.47%	52.50%	30.38%	1.62%	0.03%	100.00%		1884	6392	3699	197	4	12176	-74	-50	-33	-21	0	-178
12/31/2017	15.21%	51.52%	31.51%	1.76%	0.00%	100.00%		1833	6209	3797	212	0	12051	-51	-183	98	15	-4	-125
1/31/2018	15.07%	51.78%	31.43%	1.70%	0.03%	100.00%		1804	6198	3762	203	4	11971	-29	-11	-35	-9	4	-80
2/28/2018	15.70%	51.83%	30.72%	1.72%	0.03%	100.00%		1880	6208	3679	206	4	11977	76	10	-83	3	0	6
3/31/2018	16.41%	50.51%	31.78%	1.29%	0.01%	100.00%		1972	6069	3818	155	1	12015	92	-139	139	-51	-3	38
4/30/2018	15.76%	50.79%	32.14%	1.31%	0.00%	100.00%		1888	6084	3850	157	0	11979	-84	15	32	2	-1	-36
5/31/2018	16.29%	51.66%	30.62%	1.39%	0.03%	100.00%		1957	6207	3679	167	4	12014	69	123	-171	10	4	35
6/30/2018	16.34%	51.69%	30.59%	1.37%	0.00%	100.00%		1963	6209	3675	165	0	12012	6	2	-4	-2	-4	-2
7/31/2018	16.17%	51.52%	30.89%	1.39%	0.03%	100.00%		1946	6201	3718	167	4	12036	-17	-8	43	2	4	24
8/31/2018	16.29%	51.17%	31.15%	1.40%	0.00%	100.00%		1968	6182	3763	169	0	12082	22	-19	45	2	-4	46
9/30/2018	16.36%	51.11%	31.12%	1.40%	0.00%	100.00%		1975	6170	3757	169	0	12071	7	-12	-6	0	0	-11
10/31/2018	16.45%	51.10%	31.00%	1.45%	0.00%	100.00%		1980	6151	3732	174	0	12037	5	-19	-25	5	0	-34
11/30/2018	16.39%	53.07%	29.17%	1.38%	0.00%	100.00%		1964	6361	3496	165	0	11986	-16	210	-236	-9	0	-51
12/31/2018	16.14%	51.23%	31.25%	1.38%	0.00%	100.00%		1930	6125	3736	165	0	11956	-34	-236	240	0	0	-30
1/31/2019	16.14%	51.43%	31.08%	1.36%	0.00%	100.00%		1917	6110	3693	161	0	11881	-13	-15	-43	-4	0	-75
2/28/2019	15.77%	51.75%	31.20%	1.28%	0.00%	100.00%		1867	6128	3694	152	0	11841	-50	18	1	-9	0	-40
3/31/2019	16.09%	51.73%	30.79%	1.39%	0.00%	100.00%		1906	6127	3647	165	0	11845	39	-1	-47	13	0	4
4/30/2019	16.10%	52.35%	30.07%	1.48%	0.00%	100.00%		1902	6182	3551	175	0	11810	-4	55	-96	10	0	-35
5/31/2019	15.85%	52.36%	30.37%	1.42%	0.00%	100.00%		1861	6149	3566	167	0	11743	-41	-33	15	-8	0	-67
6/30/2019	16.55%	51.89%	30.17%	1.39%	0.00%	100.00%		1927	6044	3514	162	0	11647	66	-105	-52	-5	0	-96
7/31/2019	16.69%	51.68%	30.13%	1.49%	0.00%	100.00%		1949	6034	3518	174	0	11675	22	-10	4	12	0	28
8/31/2019	16.74%	51.72%	30.15%	1.39%	0.00%	100.00%		1945	6009	3503	162	0	11619	-4	-25	-15	-12	0	-56
9/30/2019	16.63%	50.04%	31.87%	1.46%	0.00%	100.00%		1917	5767	3673	168	0	11525	-28	-242	170	6	0	-94
10/31/2019	17.20%	49.69%	31.66%	1.45%	0.00%	100.00%		1964	5674	3615	166	0	11419	47	-93	-58	-2	0	-106
11/30/2019	17.42%	49.72%	31.34%	1.52%	0.00%	100.00%		1977	5642	3557	172	0	11348	13	-32	-58	6	0	-71
12/31/2019	17.12%	50.85%	30.60%	1.44%	0.00%	100.00%		1928	5727	3446	162	0	11263	-49	85	-111	-10	0	-85
1/1/2020	17.62%	50.51%	30.40%	1.47%	0.00%	100.00%		1978	5669	3412	165	0	11224	50	-58	-34	3	0	-39
2/29/2020	17.29%	50.53%	30.68%	1.50%	0.00%	100.00%		1943	5678	3448	169	0	11238	-35	9	36	4	0	14
3/31/2020	16.15%	50.97%	31.61%	1.24%	0.04%	100.00%		1797	5672	3518	138	4	11129	-146	-6	70	-31	4	-109
4/30/2020	15.07%	51.52%	32.19%	1.21%	0.00%	100.00%		1662	5683	3551	134	0	11030	-135	11	33	-4	-4	-99
5/31/2020	13.82%	51.92%	32.78%	1.48%	0.00%	100.00%		1501	5639	3560	161	0	10861	-161	-44	9	27	0	-169
6/30/2020	13.10%	52.20%	33.10%	1.60%	0.00%	100.00%		1412	5628	3568	173	0	10781	-89	-11	8	12	0	-80
7/31/2020	13.93%	51.51%	33.08%	1.48%	0.00%	100.00%		1483	5483	3521	158	0	10645	71	-145	-47	-15	0	-136

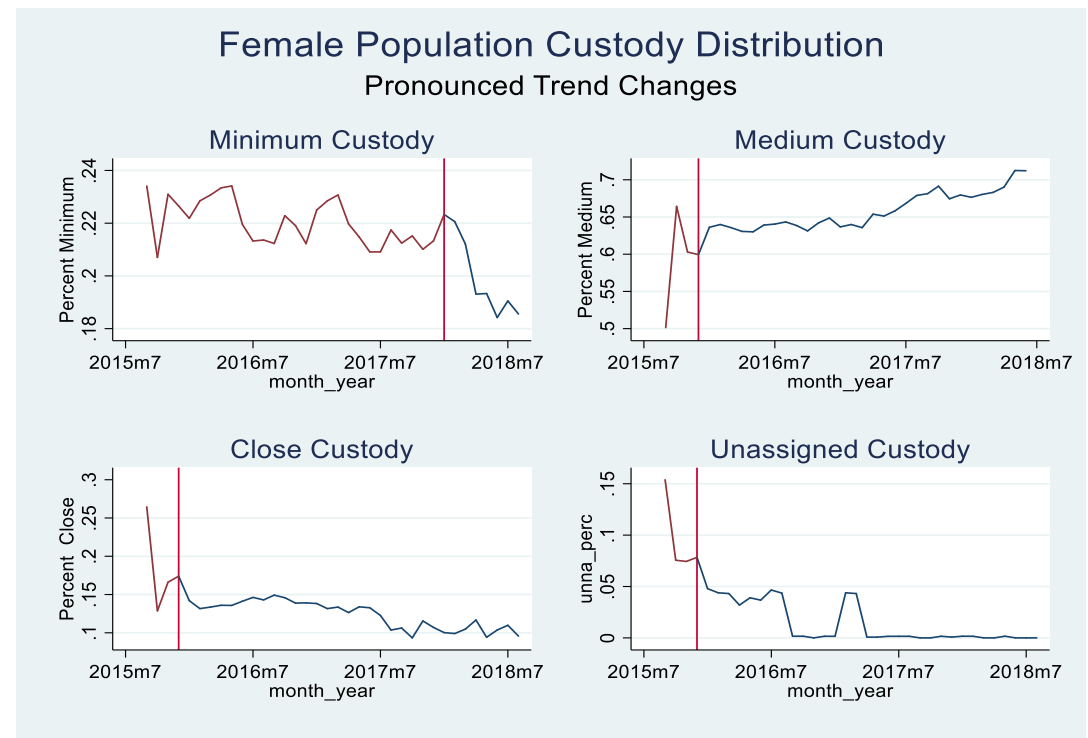
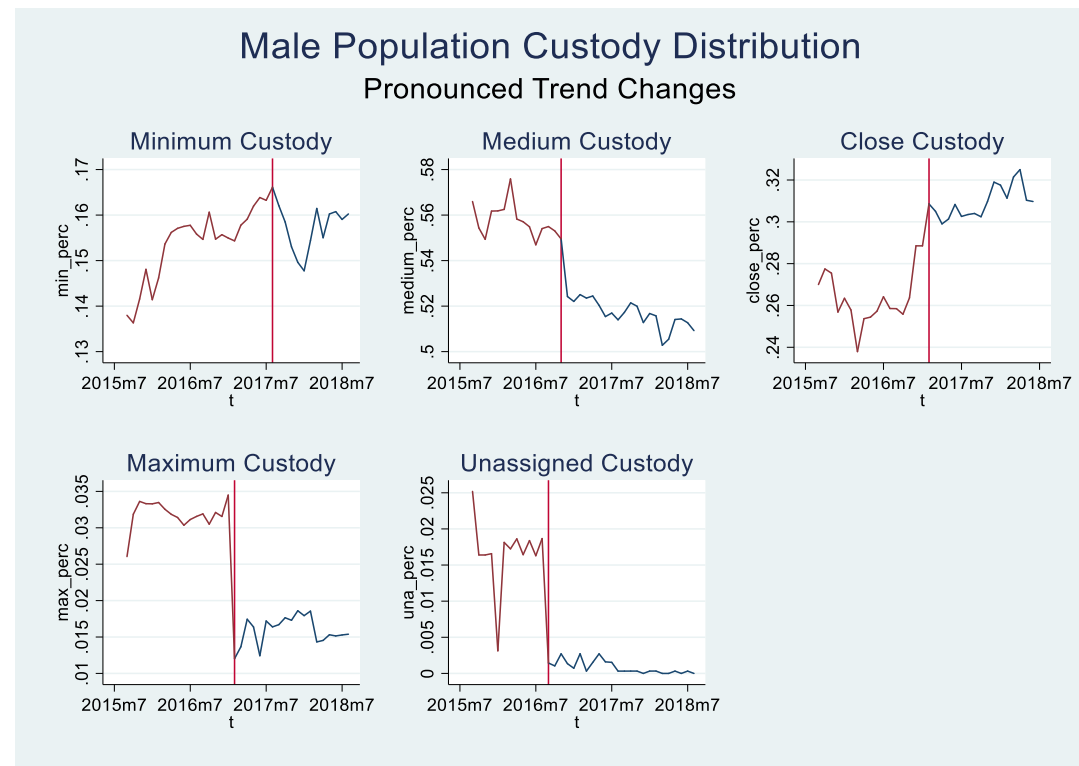
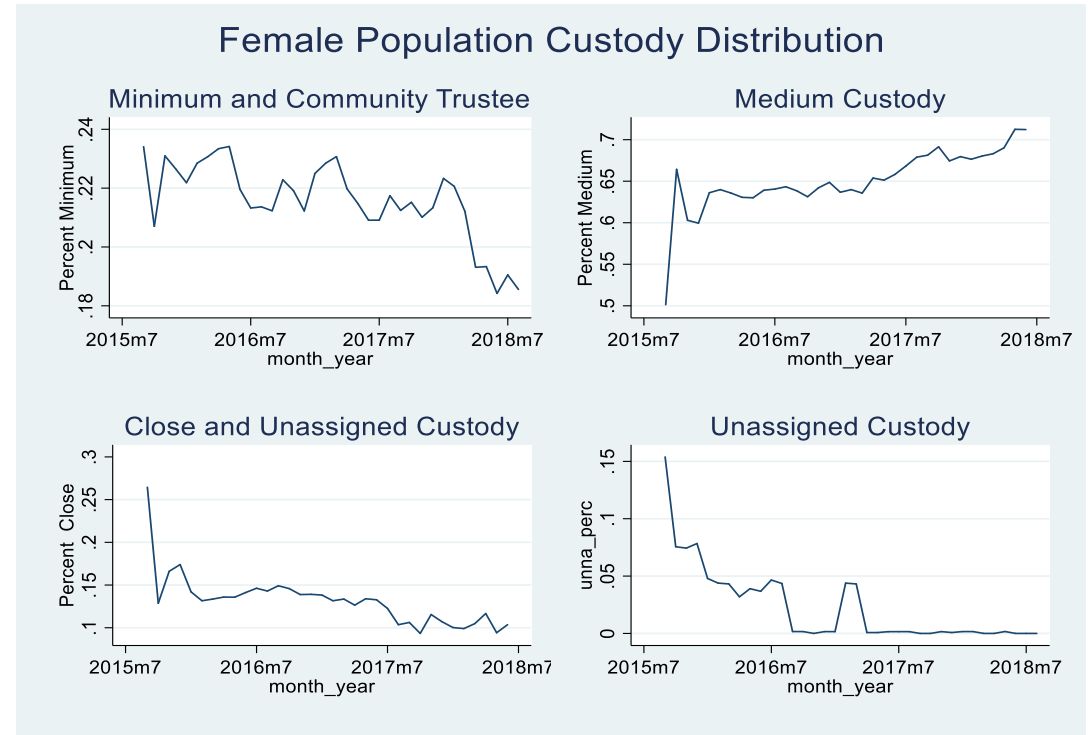
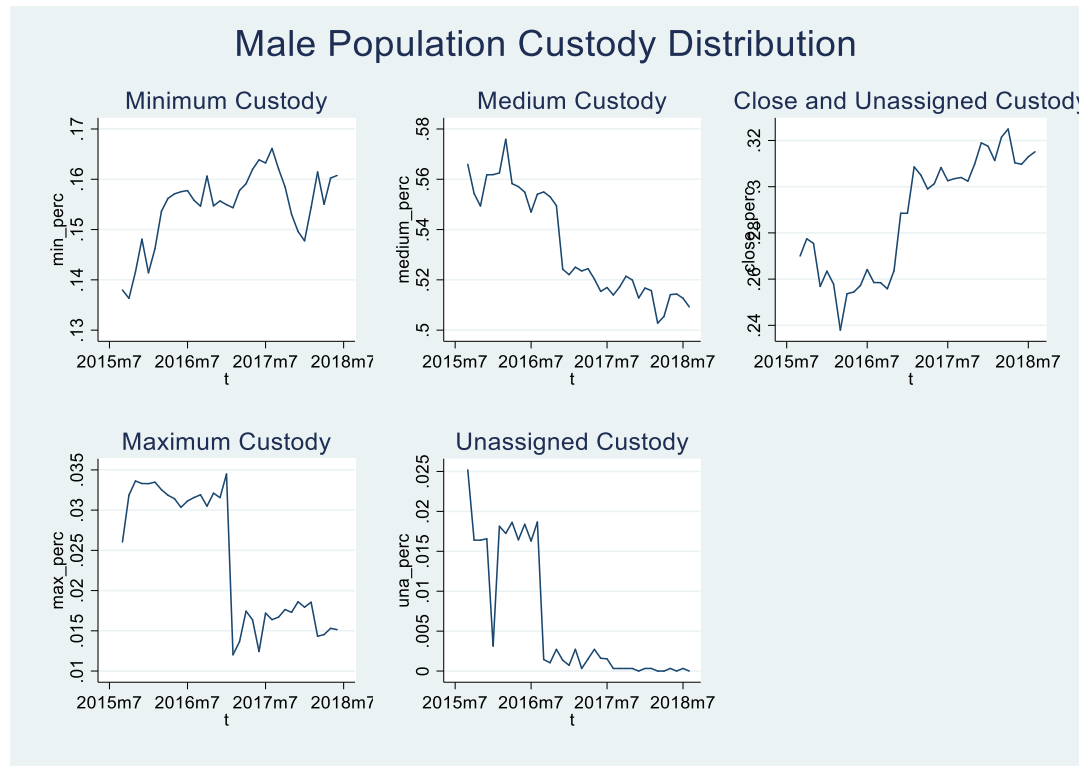
CUSTODY DISTRIBUTION OF THE IN-HOUSE POPULATION WITHOUT INDIVIDUALS HOUSED TEMPORARILY IN FACILITIES OUT OF STATE

FEMALE POPULATION CUSTODY DISTRIBUTION							POPULATION BY CUSTODY LEVEL							CHANGE IN POPULATION BY CUSTODY LEVEL					
DATE	MIN&CT	MED	CLS	MAX	UNA	TOTAL	DATE	MIN&CT	MED	CLS	MAX	UNA	TOTAL	MIN&CT	MED	CLS	MAX	UNA	TOTAL
01/31/2015	23.41%	50.14%	11.06%	0.00%	15.39%	100.00%	01/31/2015	254	544	120	0	167	1085						0
03/31/2015	20.70%	66.43%	5.31%	0.00%	7.56%	100.00%	03/31/2015	230	738	59	0	84	1111	-24	194	-61	0	-83	26
10/31/2015	23.10%	60.29%	9.17%	0.00%	7.44%	100.00%	10/31/2015	267	697	106	0	86	1156	37	-41	47	0	2	45
11/30/2015	22.65%	59.95%	9.56%	0.00%	7.84%	100.00%	11/30/2015	263	696	111	0	91	1161	-4	-1	5	0	5	5
12/31/2015	22.18%	63.61%	9.41%	0.00%	4.79%	100.00%	12/31/2015	264	757	112	0	57	1190	1	61	1	0	-34	29
02/29/2016	22.85%	63.99%	8.77%	0.00%	4.39%	100.00%	02/29/2016	276	773	106	0	53	1208	12	16	-6	0	-4	18
03/31/2016	23.07%	59.83%	12.78%	0.00%	4.32%	100.00%	03/31/2016	278	766	109	0	52	1205	2	-7	3	0	-1	-3
04/30/2016	23.34%	63.06%	10.40%	0.00%	3.19%	100.00%	04/30/2016	285	770	127	0	39	1221	7	4	18	0	-13	16
05/31/2016	23.41%	63.01%	9.67%	0.00%	3.90%	100.00%	05/31/2016	288	775	119	0	48	1230	3	5	-8	0	9	9
06/30/2016	22.85%	63.99%	8.77%	0.00%	4.39%	100.00%	06/30/2016	269	783	128	0	45	1225	-19	8	9	0	-3	-5
07/31/2016	21.32%	64.05%	9.97%	0.00%	4.66%	100.00%	07/31/2016	261	784	122	0	57	1224	-8	1	-6	0	12	-1
08/31/2016	21.36%	64.34%	9.94%	0.00%	4.35%	100.00%	08/31/2016	260	783	121	0	53	1217	-1	-1	-1	0	-4	-7
9/30/2016	21.23%	63.85%	14.75%	0.00%	0.16%	100.00%	9/30/2016	259	779	180	0	2	1220	-1	-4	59	0	-51	3
10/31/2016	22.29%	63.13%	14.42%	0.00%	0.16%	100.00%	10/31/2016	275	779	178	0	2	1234	16	0	-2	0	0	14
11/30/2016	21.91%	64.21%	13.88%	0.00%	0.00%	100.00%	11/30/2016	273	800	173	0	0	1246	-2	21	-5	0	-2	12
12/31/2016	21.22%	64.86%	13.75%	0.00%	0.16%	100.00%	12/31/2016	267	816	173	0	2	1258	-6	16	0	0	2	12
1/31/2017	22.50%	63.67%	13.67%	0.00%	0.16%	100.00%	1/31/2017	288	815	175	0	2	1280	21	-1	2	0	0	22
2/28/2017	23.06%	63.20%	13.59%	0.00%	0.16%	100.00%	2/28/2017	276	773	106	0	53	1208	-12	-42	-69	0	51	-72
3/31/2017	23.04%	63.69%	13.11%	0.00%	0.16%	100.00%	3/31/2017	278	766	109	0	52	1205	2	-7	3	0	-1	-3
4/30/2017	21.97%	65.38%	12.57%	0.00%	0.08%	100.00%	4/30/2017	285	848	163	0	1	1297	7	82	54	0	-51	92
5/31/2017	21.48%	65.13%	13.32%	0.00%	0.08%	100.00%	5/31/2017	279	846	173	0	1	1299	-6	-2	10	0	0	2
6/30/2017	20.91%	65.82%	13.12%	0.00%	0.15%	100.00%	6/30/2017	271	853	170	0	2	1296	-8	7	-3	0	1	-3
7/31/2017	20.91%	66.82%	12.11%	0.00%	0.16%	100.00%	7/31/2017	266	850	154	0	2	1272	-5	-3	-16	0	0	-24
8/31/2017	21.74%	67.90%	10.20%	0.00%	0.16%	100.00%	8/31/2017	277	865	130	0	2	1274	11	15	-24	0	0	2
9/30/2017	21.24%	68.14%	10.62%	0.00%	0.00%	100.00%	9/30/2017	270	866	135	0	0	1271	-7	1	5	0	-2	-3
10/31/2017	21.52%	69.15%	9.34%	0.00%	0.00%	100.00%	10/31/2017	272	874	118	0	0	1264	2	8	-17	0	0	-7
11/30/2017	21.01%	67.44%	11.39%	0.00%	0.16%	100.00%	11/30/2017	262	841	142	0	2	1247	-10	-33	24	0	2	-17
12/31/2017	21.33%	67.96%	10.62%	0.00%	0.08%	100.00%	12/31/2017	263	838	131	0	1	1233	1	-3	-11	0	-1	-14
1/31/2018	22.33%	67.64%	9.86%	0.00%	0.16%	100.00%	1/31/2018	274	830	121	0	2	1227	11	-8	-10	0	1	-6
2/28/2018	22.06%	68.04%	9.74%	0.00%	0.16%	100.00%	2/28/2018	274	845	121	0	2	1242	0	15	0	0	0	15
3/31/2018	21.21%	68.31%	10.48%	0.00%	0.00%	100.00%	3/31/2018	263	847	130	0	0	1240	-11	2	9	0	-2	-2
4/30/2018	19.31%	69.02%	11.67%	0.00%	0.00%	100.00%	4/30/2018	235	840	142	0	0	1217	-28	-7	12	0	0	-23
5/31/2018	19.33%	71.25%	9.25%	0.00%	0.17%	100.00%	5/31/2018	232	855	111	0	2	1200	-3	15	-31	0	2	-17
6/30/2018	18.42%	71.22%	10.36%	0.00%	0.00%	100.00%	6/30/2018	224	866	126	0	0	1216	-8	11	15	0	-2	16
7/31/2018	19.05%	69.97%	10.98%	0.00%	0.00%	100.00%	7/31/2018	229	841	132	0	0	1202	5	-25	6	0	0	-14
8/31/2018	18.56%	71.87%	9.57%	0.00%	0.00%	100.00%	8/31/2018	221	856	114	0	0	1191	-8	15	-18	0	0	-11
9/30/2018	18.47%	68.51%	13.03%	0.00%	0.00%	100.00%	9/30/2018	224	831	158	0	0	1213	3	-25	44	0	0	22
10/31/2018	17.58%	69.65%	12.77%	0.00%	0.00%	100.00%	10/31/2018	216	856	157	0	0	1229	-8	25	-1	0	0	16
11/30/2018	17.25%	75.16%	7.59%	0.00%	0.00%	100.00%	11/30/2018	216	941	95	0	0	1252	0	85	-62	0	0	23
12/31/2018	17.77%	70.04%	12.19%	0.00%	0.00%	100.00%	12/31/2018	223	879	153	0	0	1255	7	-62	58	0	0	3
1/31/2019	18.82%	69.26%	11.91%	0.00%	0.00%	100.00%	1/31/2019	237	872	150	0	0	1259	14	-7	-3	0	0	4
2/28/2019	18.66%	69.33%	12.02%	0.00%	0.00%	100.00%	2/28/2019	236	877	152	0	0	1265	-1	5	2	0	0	6
3/31/2019	18.56%	69.59%	11.85%	0.00%	0.00%	100.00%	3/31/2019	235	881	150	0	0	1266	-1	4	-2	0	0	1
4/30/2019	18.77%	68.69%	12.54%	0.00%	0.00%	100.00%	4/30/2019	235	860	157	0	0	1252	0	-21	7	0	0	-14
5/31/2019	20.77%	68.32%	10.91%	0.00%	0.00%	100.00%	5/31/2019	259	852	136	0	0	1247	24	-8	-21	0	0	-5
6/30/2019	23.06%	67.82%	9.11%	0.00%	0.00%	100.00%	6/30/2019	286	841	113	0	0	1240	27	-11	-23	0	0	-7
7/31/2019	24.41%	67.66%	7.92%	0.00%	0.00%	100.00%	7/31/2019	302	837	98	0	0	1237	16	-4	-15	0	0	-3
8/31/2019	25.62%	66.35%	8.04%	0.00%	0.00%	100.00%	8/31/2019	322	834	101	0	0	1257	20	-3	3	0	0	20
9/30/2019	23.92%	66.85%	9.23%	0.00%	0.00%	100.00%	9/30/2019	298	833	115	0	0	1246	-24	-1	14	0	0	-11
10/31/2019	23.18%	68.09%	8.72%	0.00%	0.00%	100.00%	10/31/2019	287	843	108	0	0	1238	-11	10	-7	0	0	-8
11/30/2019	23.64%	67.69%	8.68%	0.00%	0.00%	100.00%	11/30/2019	286	819	105	0	0	1210	-1	-24	-3	0	0	-28
12/31/2019	20.22%	70.01%	9.77%	0.00%	0.00%	100.00%	12/31/2019	240	831	116	0	0	1187	-46	12	11	0	0	-23
1/1/2020	20.87%	67.09%	12.04%	0.00%	0.00%	100.00%	1/1/2020	246	791	142	0	0	1179	6	-40	26	0	0	-8
2/29/2020	23.69%	65.15%	11.16%	0.00%	0.00%	100.00%	2/29/2020	276	759	130	0	0	1165	30	-32	-12	0	0	-14
3/31/2020	22.64%	69.43%	7.93%	0.00%	0.00%	100.00%	3/31/2020	254	779	89	0	0	1122	-22	20	-41	0	0	-43
4/30/2020	19.70%	69.88%	10.43%	0.00%	0.00%	100.00%	4/30/2020	221	784	117	0	0	1122	-33	5	28	0	0	0
5/31/2020	18.77%	71.10%	10.13%	0.00%	0.00%	100.00%	5/31/2020	202	765	109	0	0	1076	-19	-19	-8	0	0	-46
6/30/2020	21.17%	66.70%	12.14%	0.00%	0.00%	100.00%	6/30/2020	225	709	129	0	0	1063	23	-56	20	0	0	-13
7/31/2020	20.16%	69.02%	10.82%	0.00%	0.00%	100.00%	7/31/2020	203	695	109	0	0	1007	-22	-14	-20	0	0	-56

Custody Level History by Month



History of Custody Levels and Trend Changes



#####